

Workshop on: Advanced PID Controller Tuning

Limited
Seats!


How to do a PID
tuning which
gives good and
optimal result?


What's the
difference with
"trial-error"
tuning?

?

Up to now, PID controller is still widely used in various industries. The use of PID controller is definitely related to PID parameters tuning. The PID parameters are proportional, integral, and derivative. PID parameters tuning is very important because it could affect the stability of the system and also give an optimal result.

In this workshop, **advanced PID controller tuning methods** will be presented, such as **fuzzy, neural network, particle swarm optimization (PSO), linear quadratic regulator (LQR), robust control** etc, and there will be a discussion about **the most known PID controller tuning method, Ziegler Nichols and Cohen Coon**. At the end of the workshop, the participants will **hands on a practical skills of PID controller tuning**.


**Thursday,
July 31, 2019**
08:00-16:00


**Non-Students/
Practitioners:
IDR 900.000**
**Students:
IDR 350.000**


**Aston Tropicana
Hotel, Bandung,
Indonesia**

SPEAKERS :

1. [Prof. Dr.-Ing. Yul Yunazwin Nazaruddin, IPM](#)

(Instrumentation and Control Researcher)

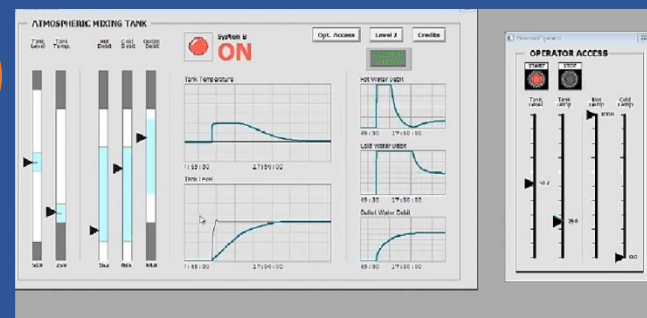
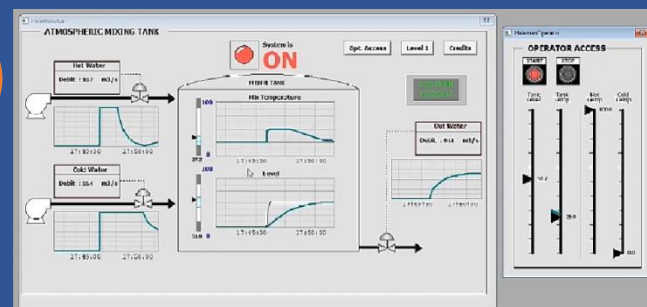
2. [Ir. Endra Joelianto, Ph.D.](#)

(Instrumentation and Control Researcher)

3. [Dipa Asiantara, M.T.](#)

(Instrumentation and Control Engineer)

PT Pupuk Sriwidjaja Palembang)



* Certificate for every workshop participants

Information and Registration:

Rina Kania

(0812 2099 9829)